



Nottingham Trent University

Centre for Innovation & Technology Exploitation

Dr Tony Allen

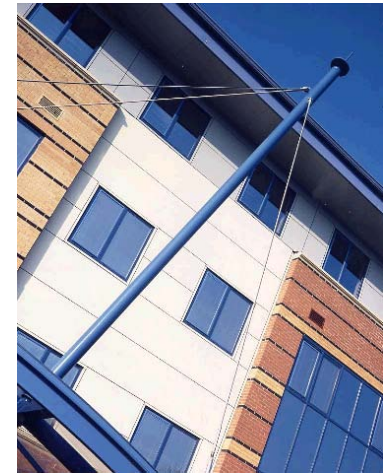


Project Part-Financed  
by the European Union

European Regional  
Development Fund

# The entrepreneurial school

- ACT Ltd
- ABC Awards
- Axiomatic Technology Ltd
- Clinphone plc
- Easibind International Ltd
- Exel Computer Systems
- Experian
- Freshcut Foods
- HMGCC
- Home Office
- Jackson Key
- Keeling and Walker Ltd
- LG Philips Displays td
- Lite Array Inc
- Microsoft
- Nottingham City Transport
- Nottingham Traffic Control Centre
- Oxley Ltd
- Patterning Technology Ltd
- PA photos Ltd
- Radio Communications Agency
- Rolls-Royce plc
- Rutherford Appleton Lab
- Semilab Ltd
- Siemens plc
- Skylight Media Ltd
- Ultra Electronics Ltd
- US Dept of Homeland Security



# Centre for Innovation & Technology Exploitation

Jointly funded by NTU and the European Regional Development Fund, the CITE aims to provide an innovation forum within which business and academia can meet to collaborate on the development of creative computing solutions.

<http://www.ntu.ac.uk/cite>

Technology demonstrators developed to date include:

- Speech-enabled systems
- Bluetooth Presence
- Wireless robotics



# Innovation ladder of support

ERDF funding allows the CITE to provide two days ICT based innovation support free of charge to regional SMEs.

Typical SME interactions include:

- Prototype development
- Software consultancy
- Technical training
- Conference organisation
- Business R&D funding advice



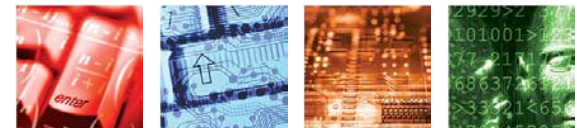
This initial support can then be developed using longer term support mechanisms such as SIS and KTP programmes.

# Stimulating Innovation for Success

- Smaller scale projects (6 - 12 months)
- Project approach identifies the deliverables the company expects
- Academic expert works with client for the duration of the project
- Look for mutual benefit:
  - Client: Time, cost, profit, process improvement
  - University: Case Studies, Student projects, Student employment, input to research



[http://www.ntu.ac.uk/business\\_professions/research\\_consultancy/stimulating\\_innovation\\_success/index.html](http://www.ntu.ac.uk/business_professions/research_consultancy/stimulating_innovation_success/index.html)



# Knowledge Transfer Partnership

- Two year government funded scheme (<http://www.ktponline.org.uk/> )
- A project central to the future of the company is identified
- A graduate – Associate – is recruited to work at the company on the project for approx two years
- The Associate is supported by an industrial supervisor and an academic supervisor
- Regular project monthly meetings



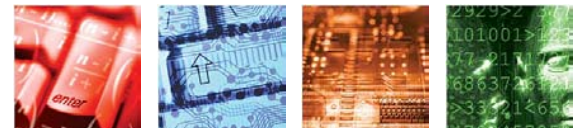
# Spin-out company creation

- Patent: UK IPO filing and PCT filing
- Innovation Fellowship: To develop proof-of-concept demonstrator
- Lachesis pathfinder award: To undertake market analysis and patent freedom-to-operate searches
- Lachesis large award: To establish spin-out company, fund commercial software development of voice biometric solution, employ application developer and business development manager(s)



# Future directions

- Integrate the CITE into the East Midlands simplified business support strategy via a series of collaborative IT Security workshops
- Coordinate delivery with other ERDF funded units at NTU and other regional Universities.
- Create a Centre of Excellence in Digital Forensics & Cyber Security
- Establish an Institute of Innovation & Exploitation in Science & Technology







Nottingham Trent University

Centre for Innovation & Technology Exploitation

- *supporting innovation through technology transfer*



**Project Part-Financed  
by the European Union**

**European Regional  
Development Fund**